

Place.



15 Corona Avenue Ashgrove QLD

6 1 2

Positioned on a whisper quiet street in the heart of Ashgrove, is 15 Corona Avenue. Elevated on 556 square meters is this charming residence which boasts countless opportunities for owner occupiers, keen renovators or savvy investors. This original home is situated in a prime position to capture cool breezes, leafy mountainous outlooks and all that the Ashgrove lifestyle encompasses.

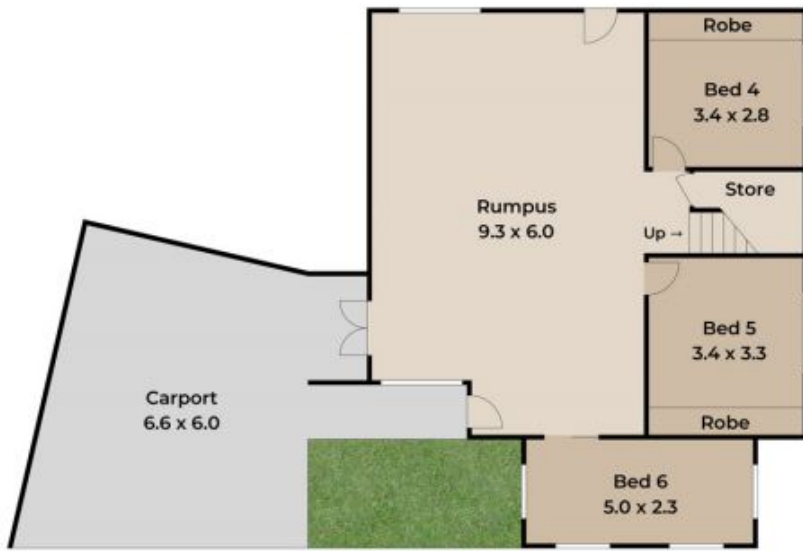
As you enter this wonderful family home, you will immediately notice the spacious interior which fuses functionality with gorgeous character features. Ornate light fixtures, crown molding, polished hardwood floors and breezeways adorn this home from floor to ceiling.

Located on the upper floor of this home is the sizeable kitchen with a lavish meals area adjacent, that flows out onto the rear deck. A separate dining and living room ideal

Land Size : 556 sqm
View : <https://www.placeproperty.com.au/sale/qld/city-north/ashgrove/residential/house/7251636>

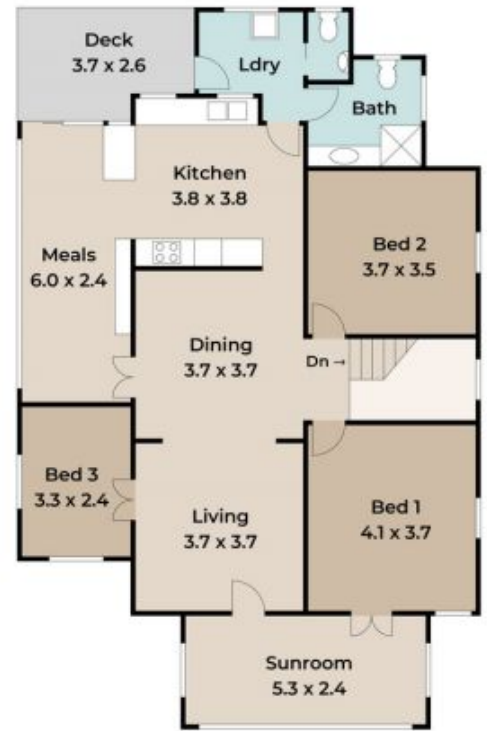


Andrew Degn
07 3858 0330



Lower Floor

Bed 6
5.0 x 2.3



Upper Floor

Approx. Floor Area | Internal 230 m² | External 65 m² | Total 295 m²

Unless otherwise stated, all dimensions are in metres. Star arrows indicate the upward direction. This plan and information contained within is for illustrative purposes only and not guaranteed to be exact. Interested parties should make their own enquiries.

