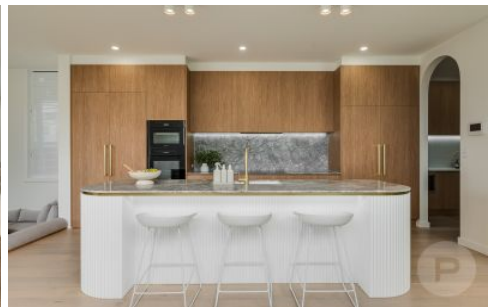


Place.



20 Thomas Street Auchenflower QLD

4 3 2

Impressive from the outset, this DAHA Architecturally designed, newly renovated family home sits in one of Auchenflower's most sought-after streets and features striking views of the Brisbane city skyline.

The home has undergone an extensive renovation that marries period features with a modern aesthetic to create expansive, voluminous spaces filled with natural light and a resort-style feel. Consideration has been given to creating a seamless flow throughout, with grand proportions, ample breakout spaces and plenty of storage that ensures the varying functional requirements of a family are met.

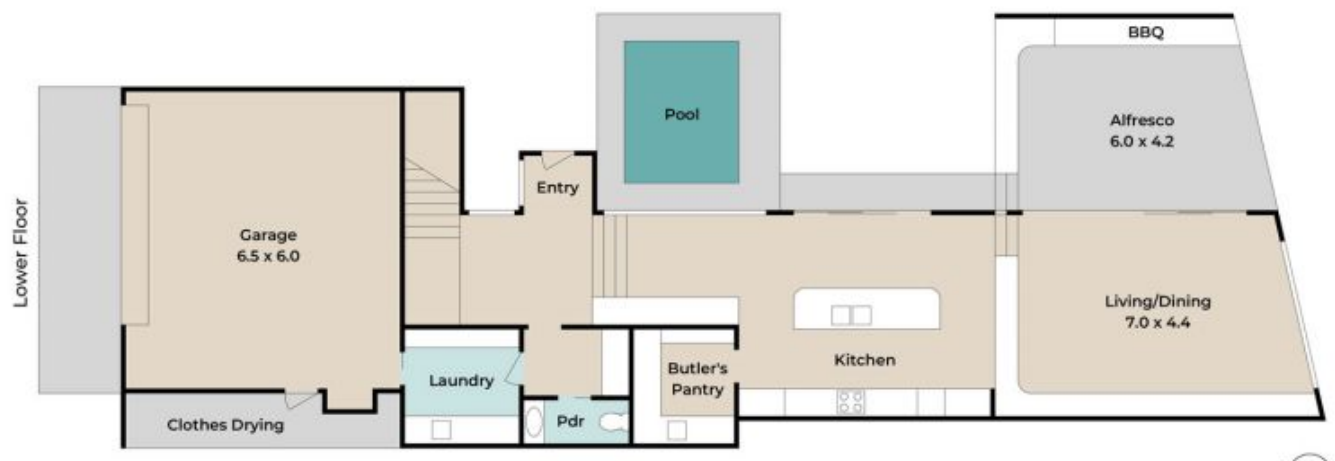
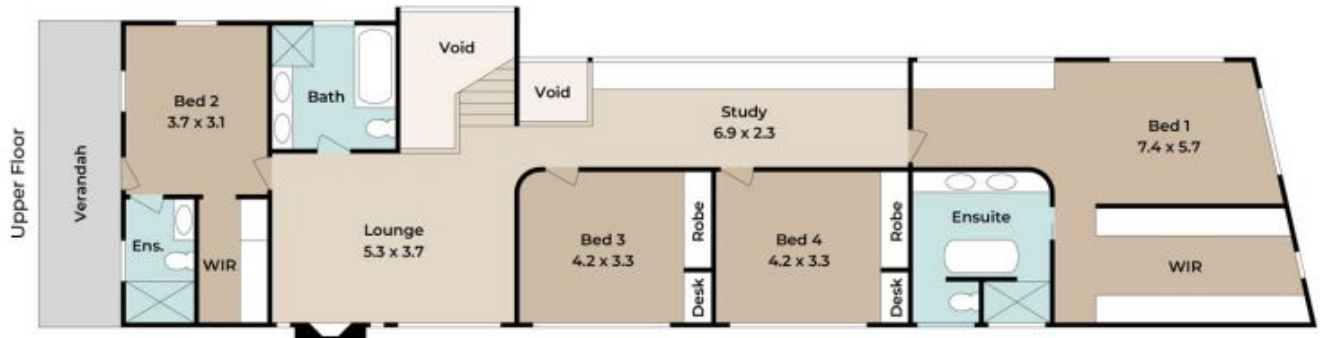
Features include:

- *Light filled entryway leads into the kitchen and sunken lounge area with built-in seating and dining nook
- *Enviably chef's kitchen boasting natural stone benchtops,

Price : \$ 3,655,000
Land Size : 352 sqm
View : <https://www.placeproperty.com.au/sale/qld/city-north/auchenflower/residential/house/8003682>



Andrew Degn
07 3858 0330



Approx. Floor Area | Internal 301 m² | External (Covered) 49 m² | Total 350 m²

Unless otherwise stated, all dimensions are in metres. Star arrows indicate the upward direction. This plan and information contained within is for illustrative purposes only and not guaranteed to be exact. Interested parties should make their own enquiries.

